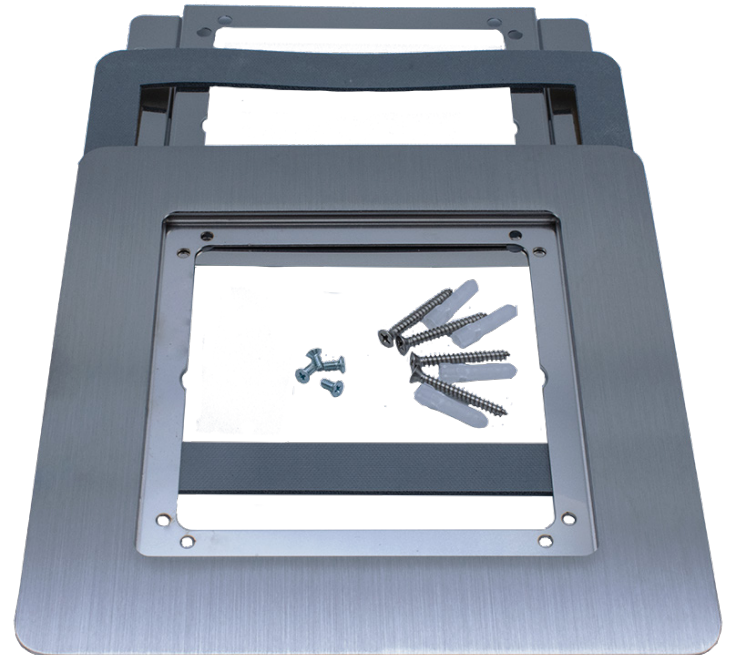


Flush Mount Kit, 1X

The CyberData Flush Mount Kit is a bezel kit that turns the CyberData 1X Outdoor Intercoms and Security Access Endpoint products into a flush-mounted installation.

Features

- Mounting kit can be used to adapt an intercom to drywall, stucco, masonry, and wood structures
- Provides greater security to prevent vandalism
- Same rugged design as our outdoor faceplates
- Stainless steel construction



Specifications

Dimensions*	7.56 in. [192 mm] Length 0.06 in. [1.52 mm] Width 7.56 in. [192 mm] Height
Weight	0.78 lbs. pounds [0.35 kg]
Boxed Weight	1.0 lbs pounds [0.45 kg]
Compliance	RoHS
Warranty	2 Years Limited
Part Number	011443

*Dimensions are measured from the perspective of the product being upright with the front of the product facing you.

Related Products:



011186 SIP
Outdoor Intercom



011433 Secure Access
Control Keypad



011410 SIP h.264
Video Outdoor Intercom



011425 RFID Secure
Access Control Endpoint



011426 RFID/Keypad Secure
Access Control Endpoint

Flush Mount Kit, 1X

Typical Installation

